

Distributor for Crystal Fountains

# Custom Fountains, Inc.

1-800-563-5628 - 513-398-1447 - Fax 513-398-5141



## NLG series

### Ground Jet



#### Function

A multi-purpose spray jet that can be used in small and medium-sized fountains. The jet can also be cast into spray aprons in public playgrounds to ensure vandal resistant installation. Gentle spray coverage. **Not water level dependent.**

#### Specification:

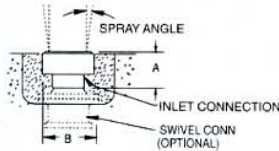
Construction shall be machined cast bronze. Faceplate shall be removable for easy cleaning with a DEFO security key.

#### Options:

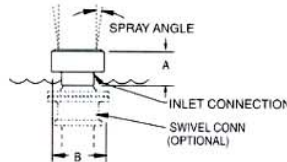
- (Add suffix)  
 K - key (cover removal)  
 Q - chrome plated  
 S - DEFO swivel connection (see ASL/ASU series)  
 W- winter cover

#### Note:

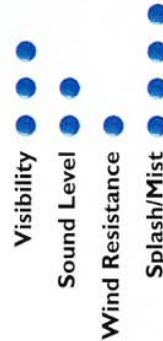
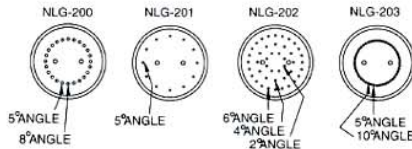
- (for optimum effect)  
 1. Requires fine screening at pump (see performance chart).  
 2. Use shaded chart section.  
 3. Contact factory for customized hole patterns.



In-ground Application



Above Water Application



#### Dimensions

#### Performance

DEFO no.	suction strainer openings required	a dim.	b dim.	inlet (npt) (bsp)	spray height	3'	5'	10'
NLG-200	.030"	3"	5"	2"	gpm head	30	39	58
					spread	48"	72"	132"
NLG-201	.030"	3"	5"	2"	gpm head	26	34	50
					spread	29"	50"	96"
NLG-202	.030"	3"	5"	2"	gpm head	25	32	47
					spread	36"	53"	94"
NLG-203	.030"	3"	5"	2"	gpm head	26	34	48
					spread	54"	80"	132"

4300 State Route 42 - Mason - Ohio - 45040